

Technical data sheet

Product features



Rack conveyor dishwasher 300, cold water, left exit, corner dryer, heat recovery system

Model	SAP Code	00018474
--------------	-----------------	----------



- Display type: Touch display
- Number of programs: 5
- Number of skin: 2
- Maximal rack feed [racks/h]: 300
- Door clear height [mm]: 450
- Rack size [mm]: 500x500
- Water consumption of the washing cycle: 0,6-1,1
- Washing cycle time [s]: 18
- Detergent and rinse pump system: ProDose - accurate dosing with a peristaltic pump
- Wash pump type: two-way - DuoFlow
- Detergent dispenser: Yes
- Rinse aid dispenser: Yes

SAP Code	00018474	Boiler power [kW]	28.000
Net Width [mm]	4771	Basin volume [l]	70
Net Depth [mm]	880	Tank power [kW]	10.500
Net Height [mm]	1615	Water consumption of the washing cycle	0,6-1,1
Net Weight [kg]	950.00	Washing cycle time [s]	18
Power electric [kW]	46.800	Maximal rack feed [racks/h]	300
Loading	413 V / 3N - 50 Hz	Door clear height [mm]	450
Boiler capacity [l]	34.00	Rack size [mm]	500x500

Technical data sheet

Technical drawing



Rack conveyor dishwasher 300, cold water, left exit, corner dryer, heat recovery system

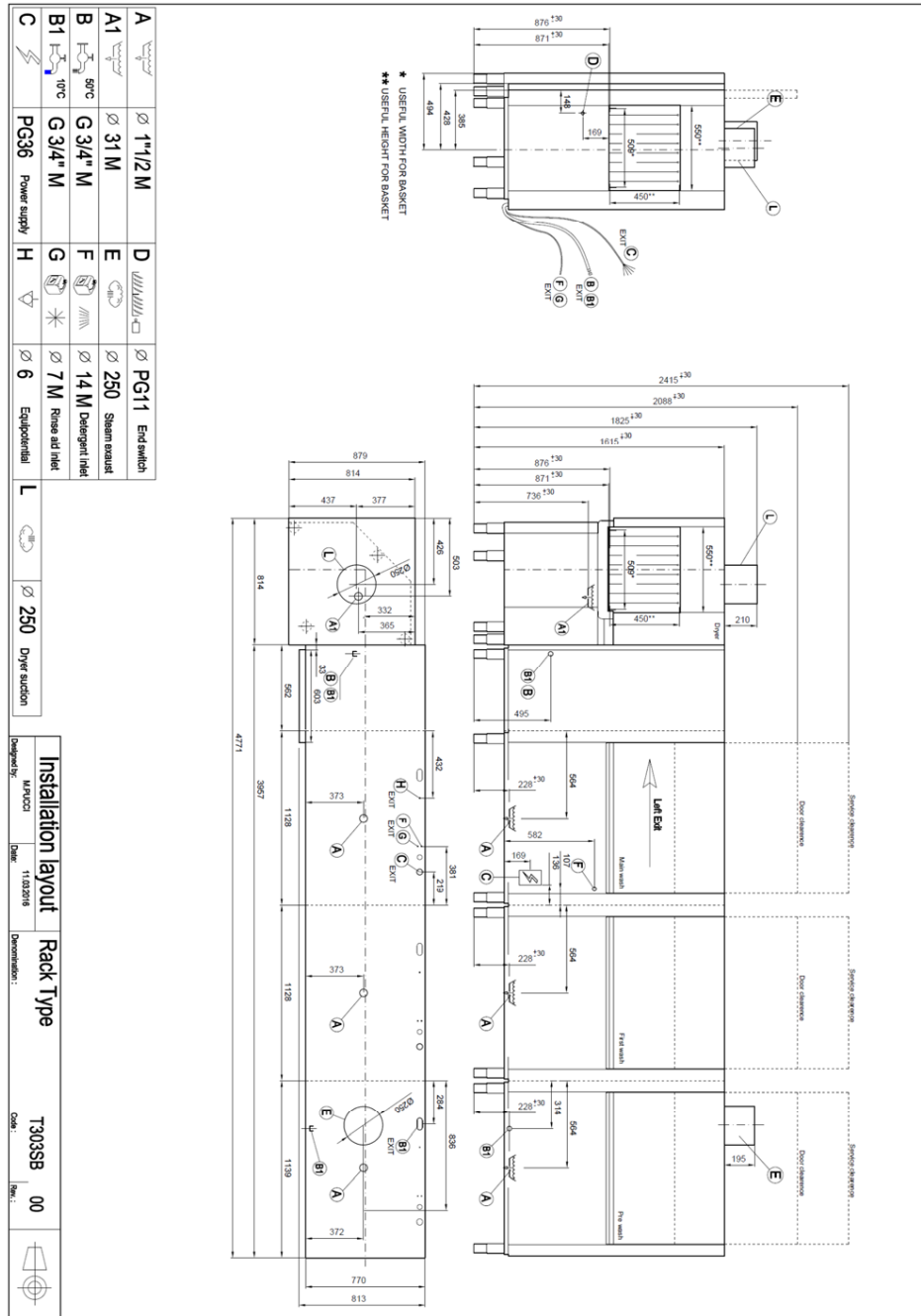
Model

SAP Code

00018474

TECHNICAL FILE

2021



Technical data sheet

Technical parameters



Rack conveyor dishwasher 300, cold water, left exit, corner dryer, heat recovery system

Model	SAP Code	00018474
-------	----------	----------

1. SAP Code:

00018474

2. Article group:

Tunel dishwasher line XT

3. Net Width [mm]:

4771

4. Net Depth [mm]:

880

5. Net Height [mm]:

1615

6. Net Weight [kg]:

950.00

7. Gross Width [mm]:

5600

8. Gross depth [mm]:

1200

9. Gross Height [mm]:

2060

10. Gross Weight [kg]:

1070.00

11. Device type:

Electric unit

12. Control type:

Touchscreen

13. Material:

AISI 317

14. Power electric [kW]:

46.800

15. Loading:

413 V / 3N - 50 Hz

16. Number of programs:

5

17. Opening of device:

Retractable up

18. Door clear height [mm]:

450

19. Inlet pressure:

0,5-4

20. Adjustable feet:

Yes

21. Number of skin:

2

22. Modular construction:

Yes

23. Pre-wash module:

Yes

24. Maximal rack feed [racks/h]:

300

25. Self-cleaning cycle:

No

26. Boiler capacity [l]:

34.00

27. Boiler power [kW]:

28.000

28. Basin volume [l]:

70

Technical data sheet

Technical parameters



Rack conveyor dishwasher 300, cold water, left exit, corner dryer, heat recovery system

Model

SAP Code

00018474

29. Tank power [kW]:

10,500

30. Number of washing arms:

5

31. Number of rinsing arms:

5

32. Number of arms for both rinsing and washing:

1

33. Arm connection:

Click-clack - easy removal with one hand

34. Washing arm type:

Firm

35. Washing arm material:

Stainless steel

36. Atmospheric boiler with rinse pump:

Yes

37. Rinsing arm type:

Firm

38. Rinsing arm material:

Stainless steel

39. Deep drawn tank:

Yes

40. Drain filter:

ProGRESSIVE + Evolution3 - triple filtration captures particles up to 0.8 mm in size, electronically controlled partial discharge before the rinsing phase ensures 0% loss of clean water into the waste

41. Thermostop:

Yes

42. Boiler thermostat adjust:

Yes

43. Rack feed capacity:

160-210-230-250-300

44. Detergent and rinse pump system:

ProDose - accurate dosing with a peristaltic pump

45. Energy Saving system:

Energy saving mode

46. Rinse system:

UltraRinse3 - composite arms common for rinsing and washing with geometry for spraying rinse water in thin jets directly against dishes

47. Heating system:

HotWash - System of simultaneous operation of the heating element of the bath and the boiler, reducing the time for starting the next cycle

48. Hot water electric valve:

No

49. Rack size [mm]:

500x500

50. Min supply water temperature [°C]:

10

51. Max supply water temperature [°C]:

60

52. Built-in softener:

No

Technical data sheet

Technical parameters



Rack conveyor dishwasher 300, cold water, left exit, corner dryer, heat recovery system

Model

SAP Code

00018474

53. Display type:

Touch display

54. Display size:

5"

55. Location of control panel:

On the front panel - long side

56. Drain pump:

No

57. Self-diagnostics:

Yes

58. Double rinse:

Yes

59. Wash pump type:

two-way - DuoFlow

60. Detergent dispenser:

Yes

61. Rinse aid dispenser:

Yes

62. Water consumption of the washing cycle:

0,6-1,1

63. Washing cycle time [s]:

18

64. Rinse water temperature [°C]:

82 (65)

65. Program High Capacity:

Yes

66. Program General purpose:

Yes

67. Program Prolonged contact (DIN 10534):

Yes

68. Program Glasses:

Yes